

BASCP NEWSLETTER

VOLUME 43, ISSUE 3

NOVEMBER 2017

CONTACT US:

617-969-3130

• Ellen Weiss, Director
ellenweiss@bascp.org

• Christie Beaulieu,
K-1 Stars Coordinator
christieb@bascp.org

• Jason Chu,
2-3 Comets Coordinator
jasonchu@bascp.org

• Alan Pedersen,
4-5 Ozone Coordinator
alanpedersen@bascp.org

• Will Chamberland,
Enrichment Coordinator/
Billing
willchamberland@bascp.org

INSIDE THIS ISSUE:

Director's Notes	1
K-1 Stars /K-Ext Program	2
2-3 Comets Program	2
4-5 Ozone Program	2
Enrichment Program	3
Billing Department	3



Director's Notes

Field Trip Payments

As noted on the Tuition and Enrollment Fees form included in your Application Packet parents are typically charged a nominal amount for elected field trips. In the September Board Meeting, the BASCP Board of Directors decided that again this year the program will cover the costs for children to participate in field trips.

Lights On After School Family Fun Night

This year's Lights On After School Family Fun Night was a tremendous success!!! Thank you to all the families who came and played with us. We had the largest number of families in attendance. It was wonderful to be able to spend time with families and show off the children's cardboard creations. Don't forget to send the photos of your family STEAM challenge!

Fire Lane

When you come to pick up your child, please park on Cypress St or pull around to the back parking lot. It is **extremely** important to keep the front driveway open in case of an emergency.

Safety and Security at BASCP

The safety and security of your children is our number one concern at BASCP. As it is beginning to get darker earlier and folks are bundling up, don't be surprised if you get questioned by the staff person manning the buzzer.

Thanksgiving Early Dismissal

Bowen After School Care Program will be closing for the Thanksgiving break at 3:00PM on Wednesday, November 22. School will be dismissed at 12:00PM, which means there will be no school lunches (**please send a lunch with your child**). Children who normally attend Extended Day on Wednesday may come, but please call to confirm right away!

Kindergarteners

Only Kindergarteners who normally take the bus home at 3:00 on Wednesdays will be coming home at 12:00 unless you make alternative arrangements with us to have your child stay with us until 3:00PM. There is no bus at 3PM. Kindergarteners who normally stay at After School until 5:55PM on Wednesdays will need to be picked up by 3:00PM on this day.

Tuesday Lunches

Please make sure that you send your child with a lunch on Tuesdays and early release Thursdays as there are no school lunches on those days.

Appropriate Dress

It is beginning to get quite chilly out there and we do go outdoors every day. Please be sure to send the appropriate outdoor clothing with your child each day.

Professional Development for Teachers

Each year BASCP teachers are required by the Department of Early Education and Care to obtain 20 hours of professional development hours. Again this year I have been part of the NASA (Newton After School Association) Conference Planning Committee and we have put together a dynamic conference for all Newton After School staff, as well as Brookline and Needham. I am proud to say that BASCP will be sending 10 teachers in addition to me for a day of training on Saturday, November 4. For the second year in a row, our very own Will Chamberland will be presenting at the conference!

K Extended Day

K Extended Day will be joining in the fun with STEAM and Literacy, exploring our favorite books and linking them to a variety of interdisciplinary activities that incorporate science, technology, engineering, the arts, and mathematics! From movement with some exciting "Moving Around Games" to a "Dancing Worm" science experiment, kindergarteners will be engaged in fun with stories and books! Remember that Group A kindergarteners are welcome to join BASCP from 12:30-3 on our 11/2 Early Release day; you should've received an e-mail from me regarding attendance (if your child does not normally stay for afterschool on Thursdays). If you haven't already, let me know whether or not to expect your child at christieb@bascp.org or 617-969-3130.

K-1 Stars

The K-1 Stars are going full STEAM ahead for November's "STEAM and Literacy" Month; we'll be integrating science, technology, engineering, the arts, and mathematics along with our favorite books and stories! Students can look forward to creating monster books with Robin, building a rollercoaster with Brandon, and making ooblek with Fran! As the weather gets colder, please remember to send your children with layers, as we will go outside every day we possibly can!

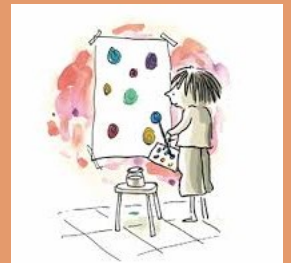
2-3 Comets

In November, we will be taking inspiration from literary works and integrating them into STEAM activities. We will be touching upon Science, Technology, Engineering, the Arts, and Math! Monica will be incorporating a series of books by Peter H. Reynolds, such as the Dot, to explore the world of art through different mediums (water color, pencil, sharpies, etc.) Tanya will be creating slime with the children as well as creating their own books. Colin will be reading a series of books and doing fun engineering and construction projects based off of the books. Be sure to check out the Field Trip Binder for upcoming trips and Maker Space activities. Nashoba Valley Skiing for 3rd graders sign ups begin. Sign up quickly for there is limited space offered for 3rd graders this year!

4-5 Ozone

November in the Ozone will be a celebration of literacy and STEAM as we combine the two fields to create engaging and enriching activities. For the "T" of STEAM, children will use technology, including Scratch, Garage Band, and iPads, to accomplish challenges based on the following books: *The Rainbow Fish*, *Where the Wild Things Are*, *Shark vs. Train*, and *Dragons Love Tacos*. It should be quite the "T" party.

Other highlights of November include geocaching, survival lashing, bridges for elephants, and our 2nd Annual Harry Potter versus Percy Jackson competition. Make sure to check our activity calendar in the Ozone to see activities related to the rest of the STEAM letters and for more literary inspiration.



Enrichment & Billing

November 2017



Enrichment:

Please check the enrichment binder located at your programs sign out station for all the scheduled enrichment opportunities that you are welcome to sign up your student to attend for the month of November.

K-1

What	When:	Time:	Where
Field Trip for Hot Chocolate	Friday, 11/3	3:30-5:30PM	Peet's Coffee
Scratch Jr	Monday, 11/6	4:00-5:00PM	Mad Maker's Lab
Scratch Jr	Tuesday, 11/7	4:00-5:00PM	Mad Maker's Lab
Scratch Jr	Friday, 11/17	4:00-5:00PM	Mad Maker's Lab
Scratch Jr	Wednesday 11/22	4:00-5:00PM	Mad Maker's Lab

Comets

What	When:	Time:	Where
Field Trip for Kindness Club	Wednesday, 11/1	3:30-5:30PM	Newton Centre
Book Creator	Thursday, 11/2	4:30-5:30PM	Mad Maker's Lab
Book Creator	Wednesday, 11/8	4:30-5:30PM	Mad Maker's Lab
Maze Design & Weaving	Monday, 11/13	4:30-5:30PM	Mad Maker's Lab
Book Creator	Tuesday, 11/14	4:30-5:30PM	Mad Makers Lab
Book Creator	Monday, 11/27	4:30-5:30PM	Mad Maker's Lab
Hypothesis Now	Thursday, 11/30	4:30-5:30PM	Mad Maker's Lab

Ozone

What	When:	Time:	Where
Book Creator	Thursday 11/2	4:00-5:30PM	Mad Maker's Lab
Book Creator	Wednesday, 11/8	4:00-5:30PM	Mad Maker's Lab
Maze Design & Weaving	Monday, 11/13	4:00-5:30PM	Mad Maker's Lab
Book Creator	Tuesday, 11/14	4:00-5:30PM	Mad Maker's Lab
Field Trip	Tuesday, 11/21	1:00-3:00PM	Brookline Public Library
Book Creator	Monday, 11/27	3:30-5:30PM	Mad Maker's Lab
Field Trip for Geo Cache	Tuesday, 11/28	1:00-3:00PM	Webster Woods
Hypothesis Now	Thursday, 11/30	4:00-5:30PM	Mad Maker's Lab

Registration for Nashoba Valley Ski School: Registrations will go into circulation on Monday, October 30th and will be due by Thursday November 30th. This class has a limit of 12 students and is filled in the order of which completed registrations and payments are submitted. This class is for students from grades 3-5, registered to attend BASCP on Tuesdays. The class is held at Nashoba Valley ski area for 4 consecutive Tuesdays in January and students are transported by the BASCP bus which leaves at 1:30 and returns at 5:30PM. This class is offered at a cost that covers your child's ski pass, instruction and if necessary specific rental equipment that may be required. All payments should be made in check and written out to Nashoba Valley Ski area and submitted to the BASCP office along with your child's registration, release to activity, bus waiver and if necessary a signed rental agreement. Specific details regarding the cost of this class will follow when the class registration goes into circulation.

Thank You as always,

William Chamberland

willchamberland@bascp.org